

[theepochtimes.com](https://www.theepochtimes.com)

Your 'Third Eye' Is Hidden In Your Brain. Here's What Scientists Have Discovered About It

By Li Yen, Epoch Times

4-5 minutes

Did you know that there is a “third eye” buried deep inside your brain? Modern medical science has proved that a complete structure of a non-functional human eye exists in the front section of our pineal gland. But is it really a “vestigial eye” as scientists claim? Or is it in fact the “third eye” or “seat of the soul,” as Eastern spiritualism and Western philosophy believe?

Pineal gland

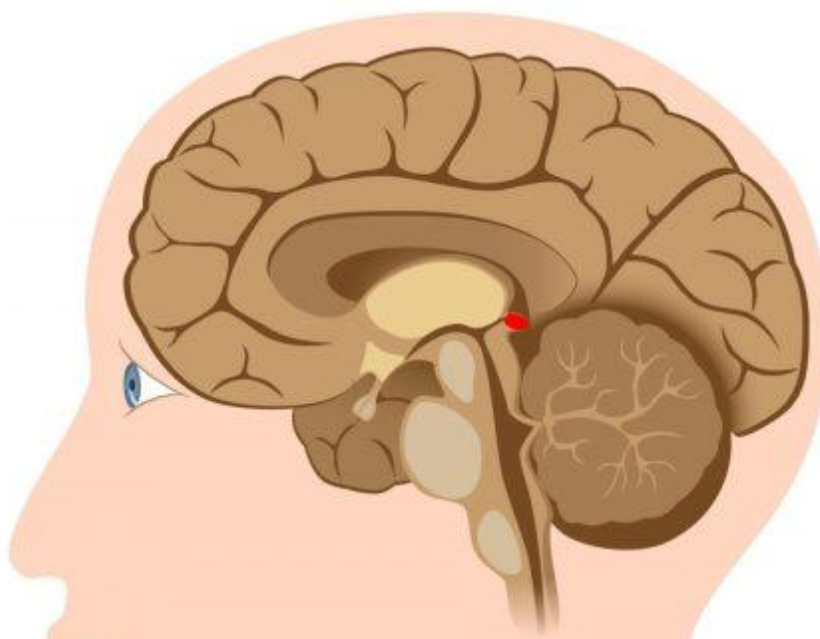


Illustration – Shutterstock | [Alila Medical Media](#)

Resembling a pine cone, the pineal gland is a centimeter-long organ that takes charge of producing melatonin, a hormone that regulates reproductive hormones, and controls the patterns of sleep and waking. But different studies over the last century indicate this tiny gland is potentially much more than it appears to be.

For thousands of years, in both Eastern spiritualism and Western philosophy, the pineal gland has been considered as the “third eye” or “gateway to higher consciousness” that could see beyond our physical world. One renowned 17th-century French philosopher, René Descartes, [regarded](#) it as the “principal seat of the soul, and the place in which all our thoughts are formed.”

As unbelievable as it may sound, modern research-based studies have in fact uncovered some evidence that could prove the claims of the ancients. Below are some of the thought-provoking scientific studies that might make you change your perspective.

Scientists have discovered a “non-functional” eye with a structure similar to the external eyes—equipped with retinal tissues and cells that act as light receptors—in our pineal gland. In 1919, Frederick Tilney and Luther Fiske Warren [wrote](#) that the similarities of the pineal gland’s structure to a human eye suggested the organ was formed to be light-sensitive and probably possesses other visual capabilities.

Illustration – Shutterstock | [Blend Images](#)

In 1995, Dr. Cheryl Craft, chair of the department of cell and neurobiology at the University of Southern California, posited the pineal gland is the “mind’s eye.”

“Using molecular biology techniques, Craft has shown that the pineal and retina express a number of genes in common,” reads an [article](#) based on Dr. Craft’s findings that was published on USC Health & Medicine. “Who knows? Maybe we’ll be the ones who resolve the big questions about mind, matter, and a clockwork universe. Only time will tell,” the article quotes Dr. Craft.

If we check more into past research, we find that Dr. Craft's work is in [accordance](#) to what scientists had discovered in the 1950s—the ability of the pineal body to detect light and produce melatonin.

In a 2013 [study](#), which supports scientific research into the nature of consciousness, a molecule known as DMT (N,N-Dimethyltryptamine) was found in rats' pineal bodies. The research was partially funded by the Cottonwood Research Foundation and was headed by Dr. Rick Strassman. DMT is a psychedelic drug, and Dr. Strassman calls it “the spirit molecule.”

Dr. Strassman, a researcher at the University of New Mexico, who injected volunteers with DMT in a U.S. government-approved clinical research, said, “the most interesting results were that high doses of DMT seemed to allow the consciousness of our volunteers to enter an out-of-body, freestanding, independent realm of existence...”

According to yet another [theory](#) published in *Journal of Biological Rhythms*, the pineal gland “appears to have evolved as an indirect way to improve vision.” The theory studies melatonin, the pineal hormone that regulates sleep and wake cycles, and represents the work of Dr. David Klein, head of Neuroendocrinology at the National Institute of Child Health and Human Development (NICHD).

Falun Dafa meditation and exercises at Wynyard Park in Sydney, Australia. (©[Evensi](#))

This is how far science has researched on the pineal gland, and further studies must be underway for sure. By the way, what are your thoughts after reading these scientific excerpts?

Is the pineal gland much more than just a vestigial eye producing hormones? Or is it indeed the “third eye” or “seat of the soul” that has the potential to peer into things beyond our dimensions? Do leave your comments.